



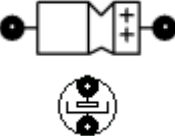








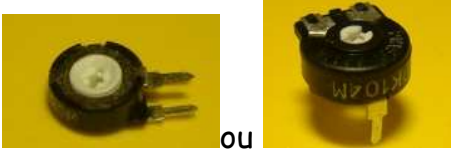
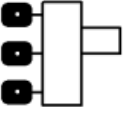
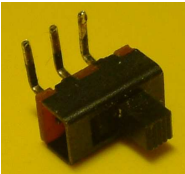
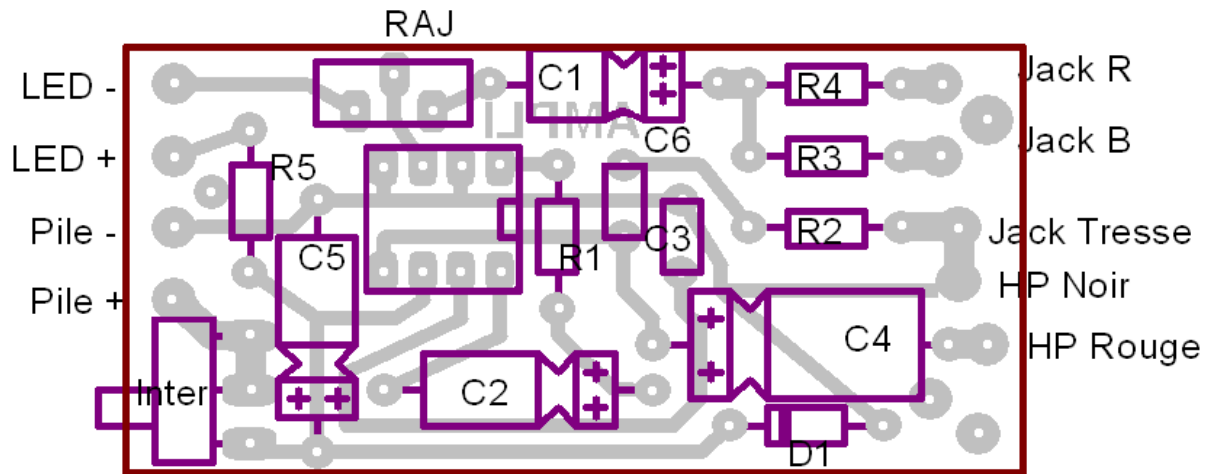


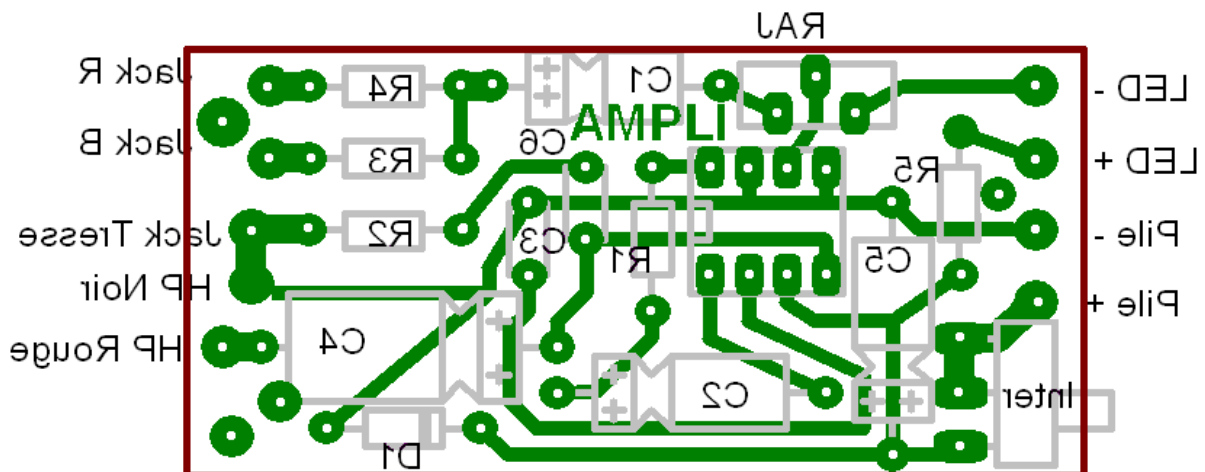
Ampli-Baladeur : Les composants électroniques

Nom	Symbole du dessin d'implantation	Photographie
Résistance		
Condensateur polyester		
Condensateur chimique polarisé		
Diode et Diode zener		
DEL ou LED		
Support de Circuit Intégré		
Résistance ajustable		 ou
Interrupteur		

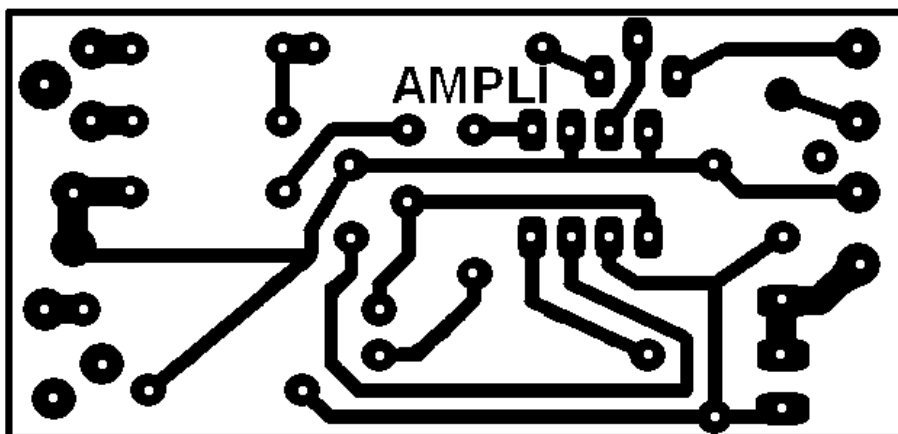
Ampli-Baladeur : Dessin du circuit (Agrandi)



Dessin d'implantation coté composant



Dessin d'implantation coté piste (cuivre)



Typon coté cuivre